

ALBA Integrated Waste Solutions Ltd

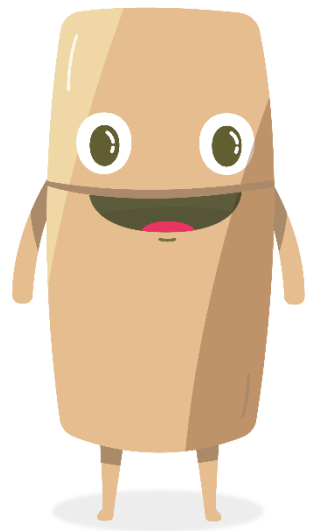
- **Joint venture of a recycling specialist ALBA Group and a local waste management service provider IWS Group Limited**
- **Government contract from 2015 to 2027 to “Design-Build-Operate-Transfer” e-waste**
- **Develop HK’s first integrated WEEE treatment facility, WEEE · PARK in Tuen Mun’s EcoPark**



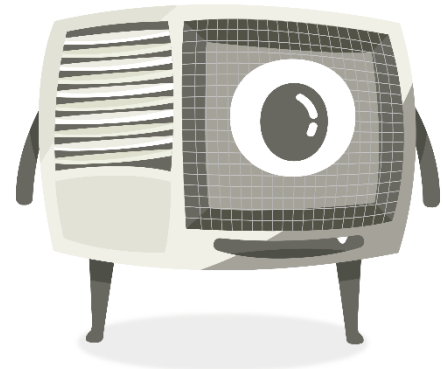
What is WEEE (E-waste)?

WEEE means Waste Electrical and Electronic Equipment* 四電一腦。

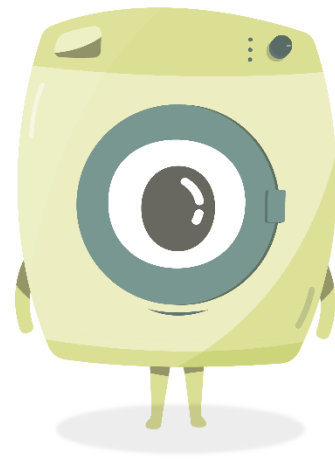
ALBA currently collects and recycles 10 types of WEEE items in Hong Kong.



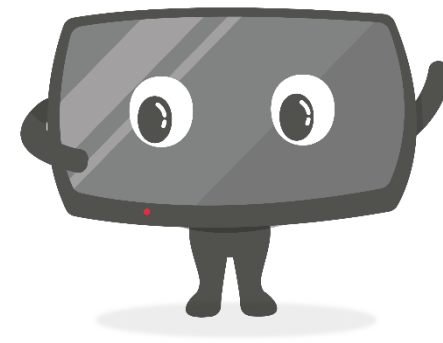
Refrigerator



Air Conditioner



Washing Machine



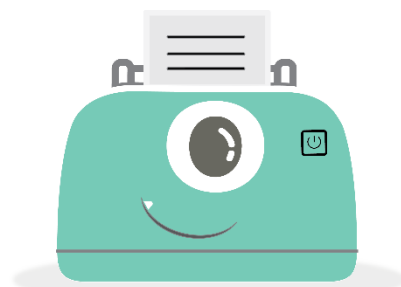
Television



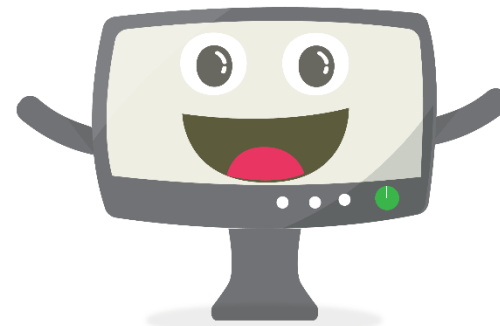
Dryer



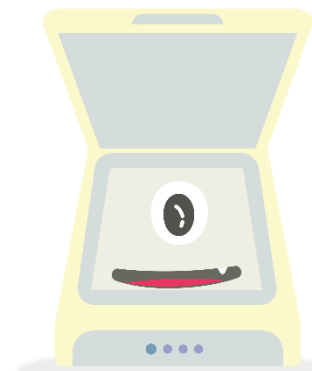
Computer



Printer



Monitor



Scanner

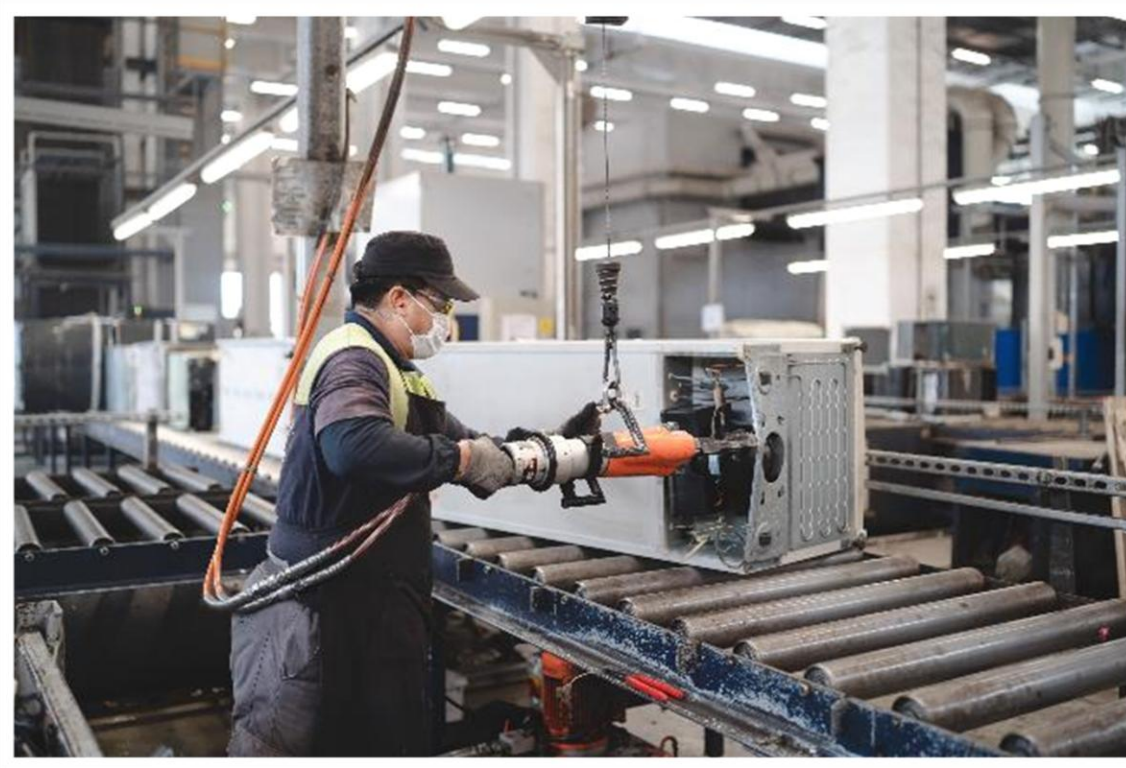


Dehumidifier

** originally as REE – regulated electrical equipment*

Why should E-waste be handled properly?

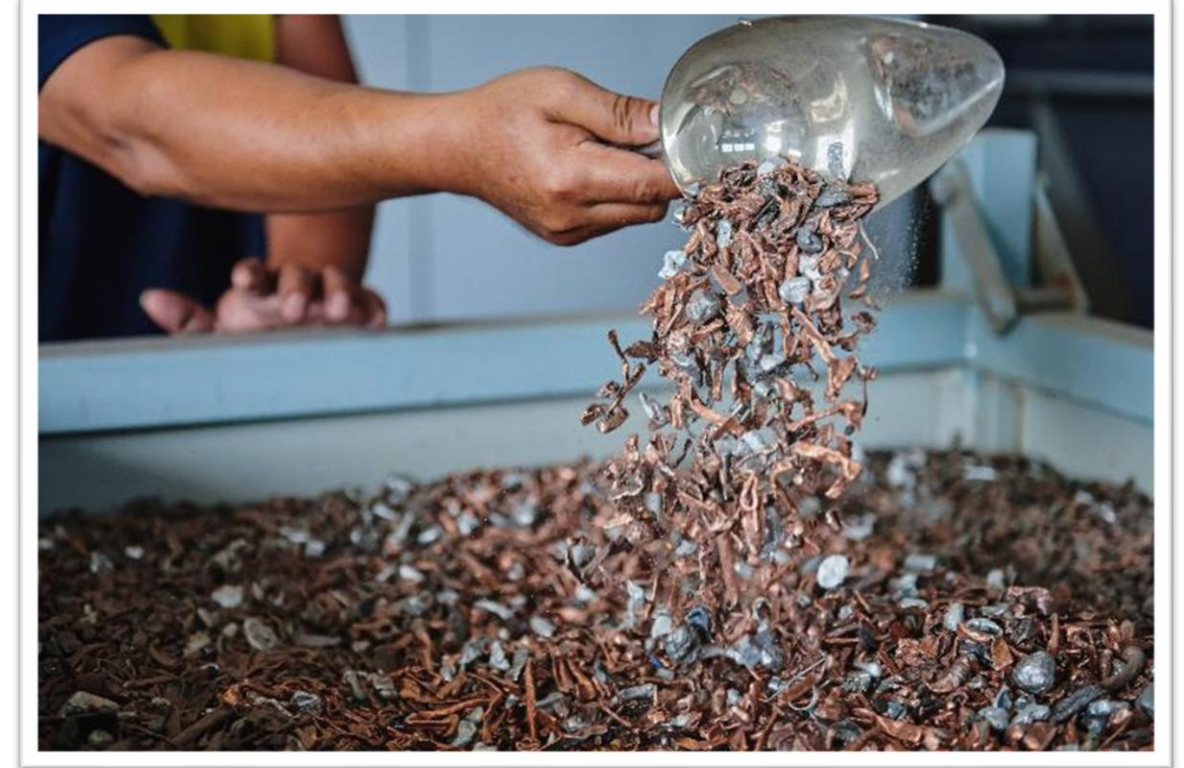
1 Detoxify and treat hazardous materials properly



2 Dispose e-waste correctly and responsibly



3 Recover valuable materials from e-waste



Statutory Free Removal Service for Public

REE Retailer sets up
Removal Service Plan
(Engage a licensed recycler)

Retailer informs
collector/recycler
the removal details

Collector/ Recycler
remove the old REE on
the scheduled date



Consumer buys an REE from retailer
and request removal service

Collector/recycler calls consumer to
confirm removal date/time

Turning Waste into Resources



Hotline & Online Application



Free Door-to-Door Collection Service



Regional Collection Centre
Sorting & Tracking System



WEEE PARK



Guided Tour



Refurbishment



Donation



Advanced Treatment
Technology



Secondary Raw Materials

Exceptional Recycling Rates
of Over 80%

One-stop
WEEE
recycling
procedure



Hotline 2676 8888



WhatsApp 6081 5096



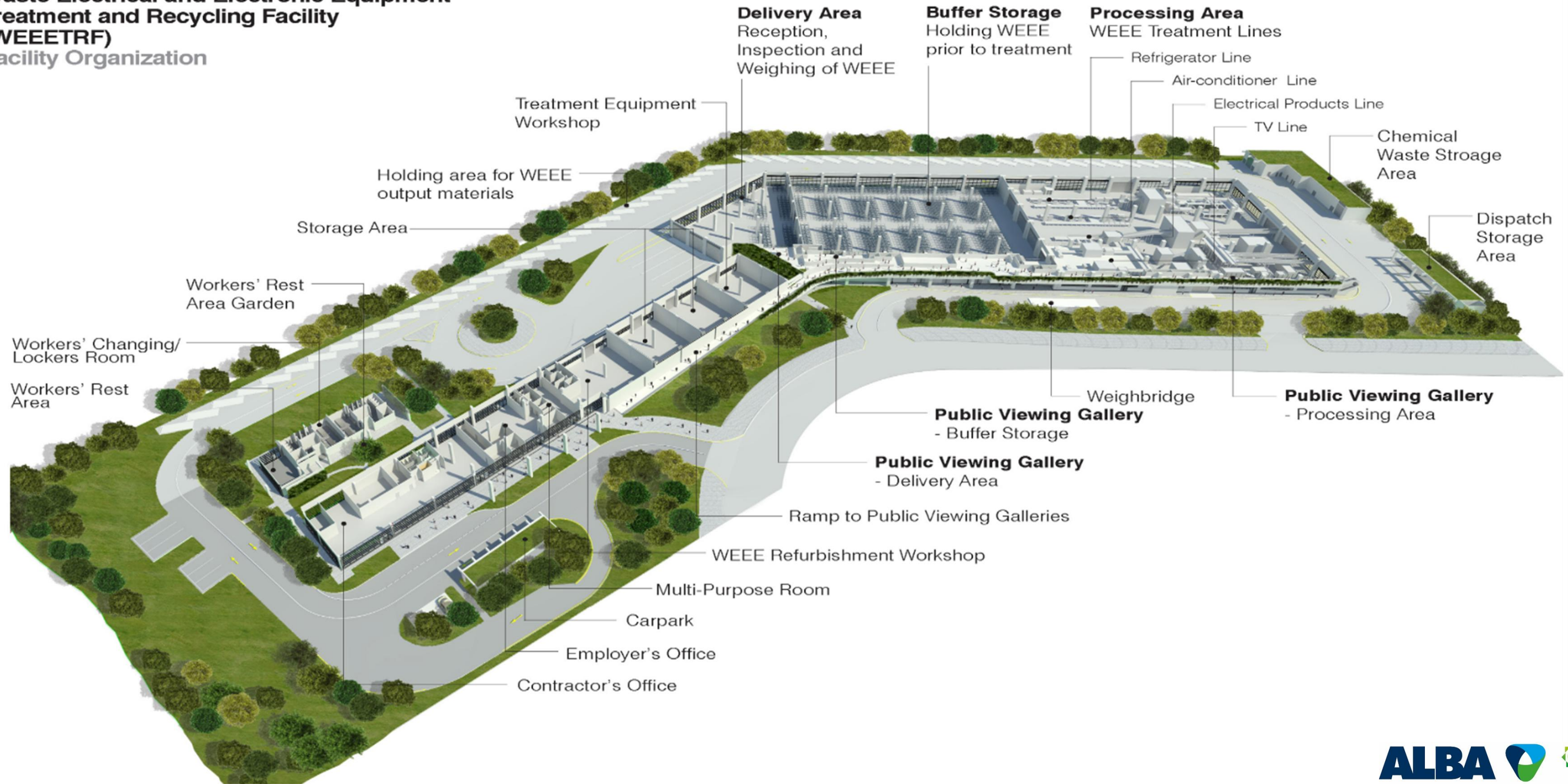
Email enquiry@weee.com.hk



www.weee.com.hk

WEEE · PARK Layout

Waste Electrical and Electronic Equipment Treatment and Recycling Facility (WEEETRF) Facility Organization



Size of WEEE · PARK

Overall size : 3 hectares
Processing Hall 3,400 square meters
Buffer Storage 2,700 square meters

Regulated electrical equipment processing capacity



Design capacity 30,000 tonnes
Maximum capacity ~56,000 tonnes

PROCESSING LINE

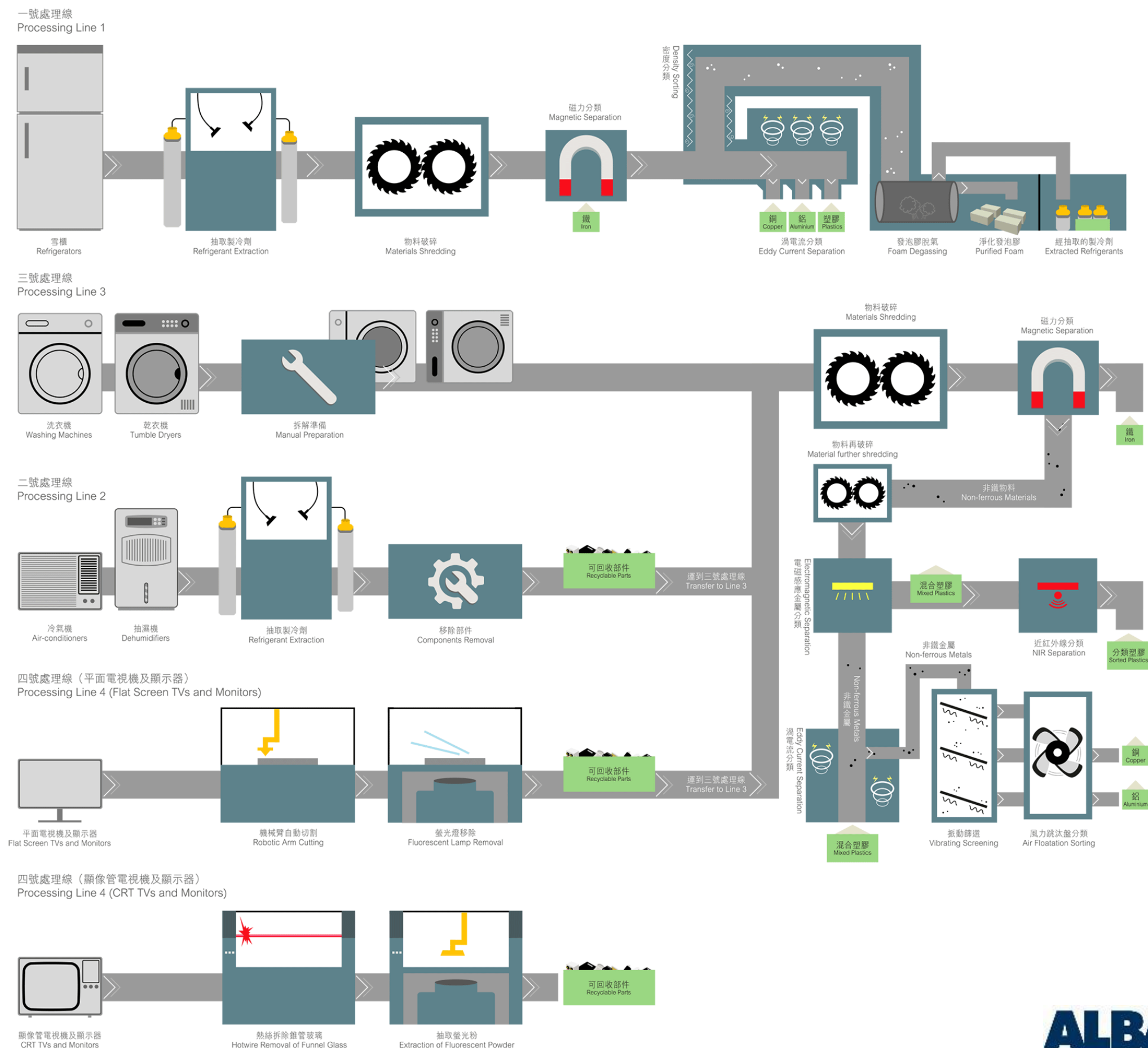
Line 1 - Refrigerator

Line 3 - Washing machine, Dryers & Computer appliances

Line 2 - Air-conditioner & Dehumidifier

Line 4b,c,d - Flat screen TV & monitor

Line 4a - CRT TV & monitor



Recovered Secondary Raw Material

Achieved

86%

WEEE recycling rate in 2024



IRON
57,500+ tonnes



COPPER
6,400+ tonnes

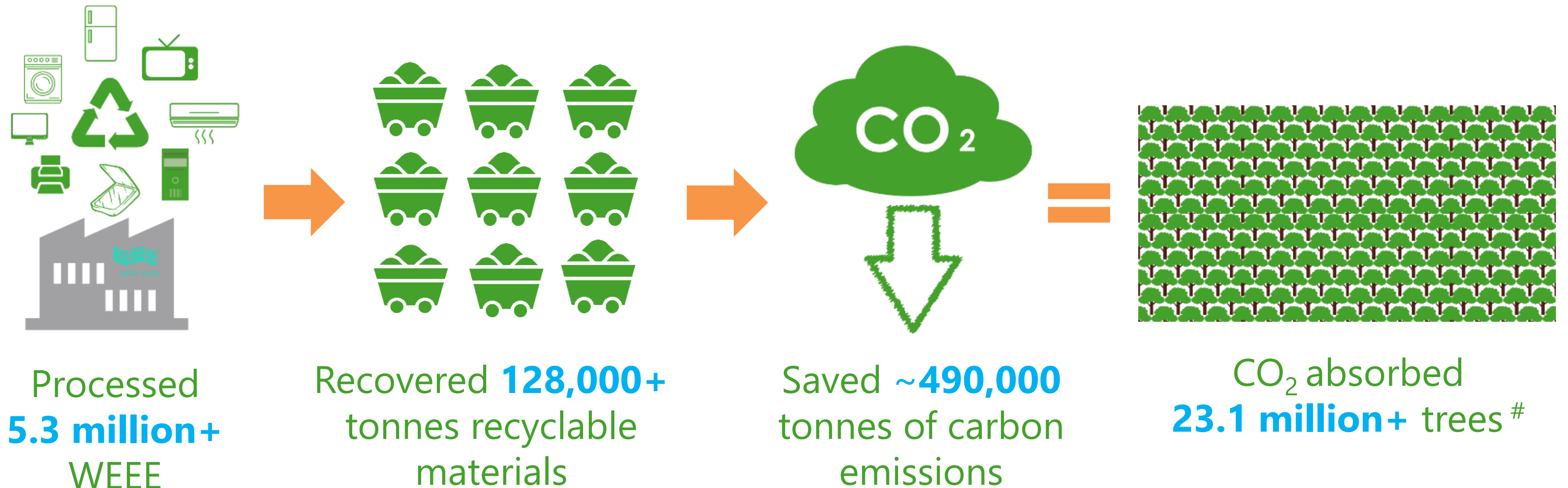


ALUMINUM
7,200+ tonnes



PLASTICS
24,000+ tonnes

Environmental Benefits – Carbon Saving



Estimated by ALBA IWS : data accumulated from 2018 to December 2024

CO₂ removed by trees in one year = net number of additional trees planted since the concerned building is constructed x Removal Factor (estimated at 23kg/tree)



33,000+
WEEE · PARK
visitors

Education and Community Outreach

As of March 2025





Donation
Select functional electrical items to refurbish and then donate



All Hong Kong citizens may benefit from our donation service.



Donated
10,000+ items

As of March 2025





Treasure raw materials.