

WEEE · PARK



Tuen Mun, Area 38, Lung Mun Road
No. 133 EcoPark, Lots P2 – P4
Completed in 2017

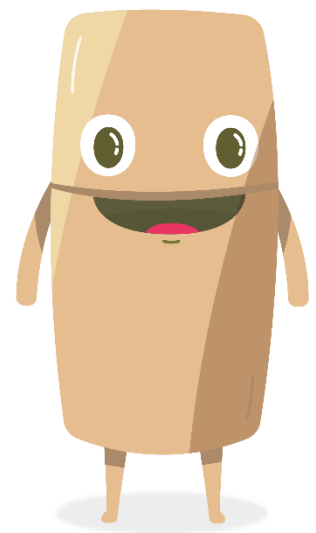
- WEEE · PARK is operated by ALBA Integrated Waste Solutions (HK) Limited – a joint venture of ALBA Group Asia and IWS Group Limited
- The project is commissioned by the government in 2015 to design and construct Waste Electrical and Electronic Equipment (WEEE) treatment facility
- WEEE · PARK handles recycling and services for air conditioner, refrigerator, washing machine, television, computer, printer, scanner, monitor, dryer, dehumidifier



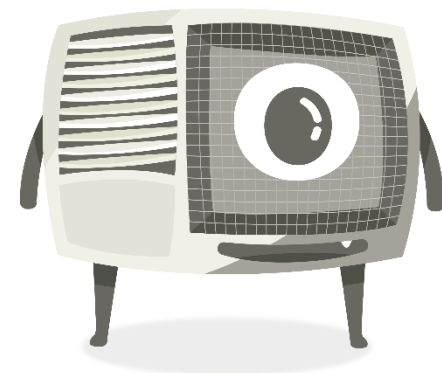
What is WEEE (E-waste)?

WEEE means Waste Electrical and Electronic Equipment* 四電一腦。

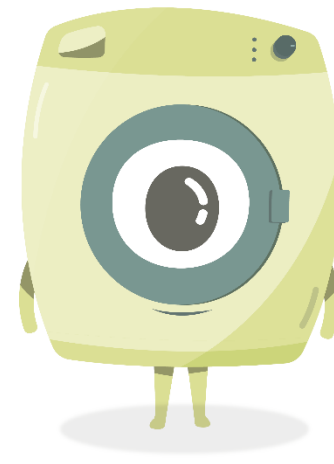
ALBA currently collects and recycles 10 types of WEEE items in Hong Kong.



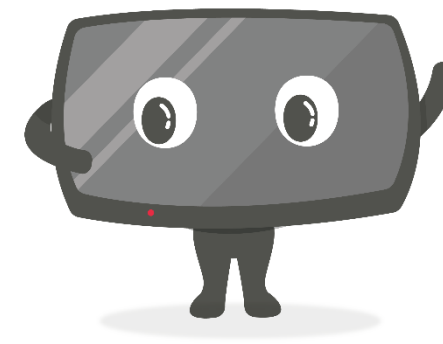
Refrigerator



Air Conditioner



Washing Machine



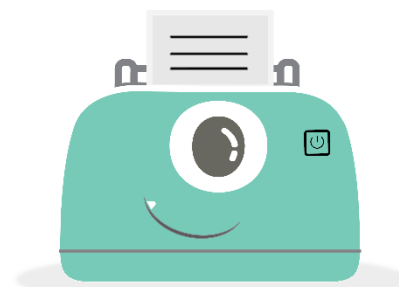
Television



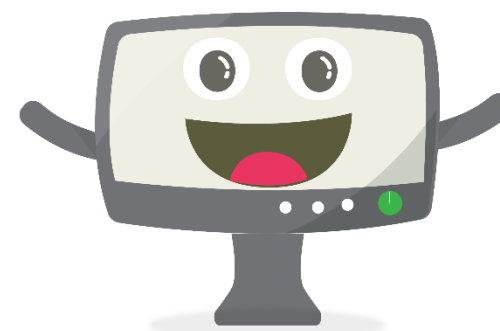
Dryer



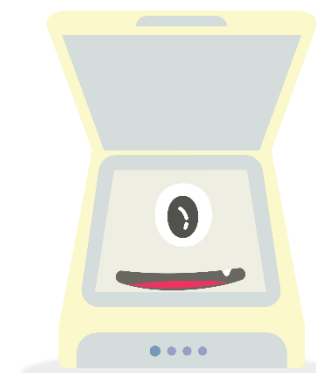
Computer



Printer



Monitor



Scanner

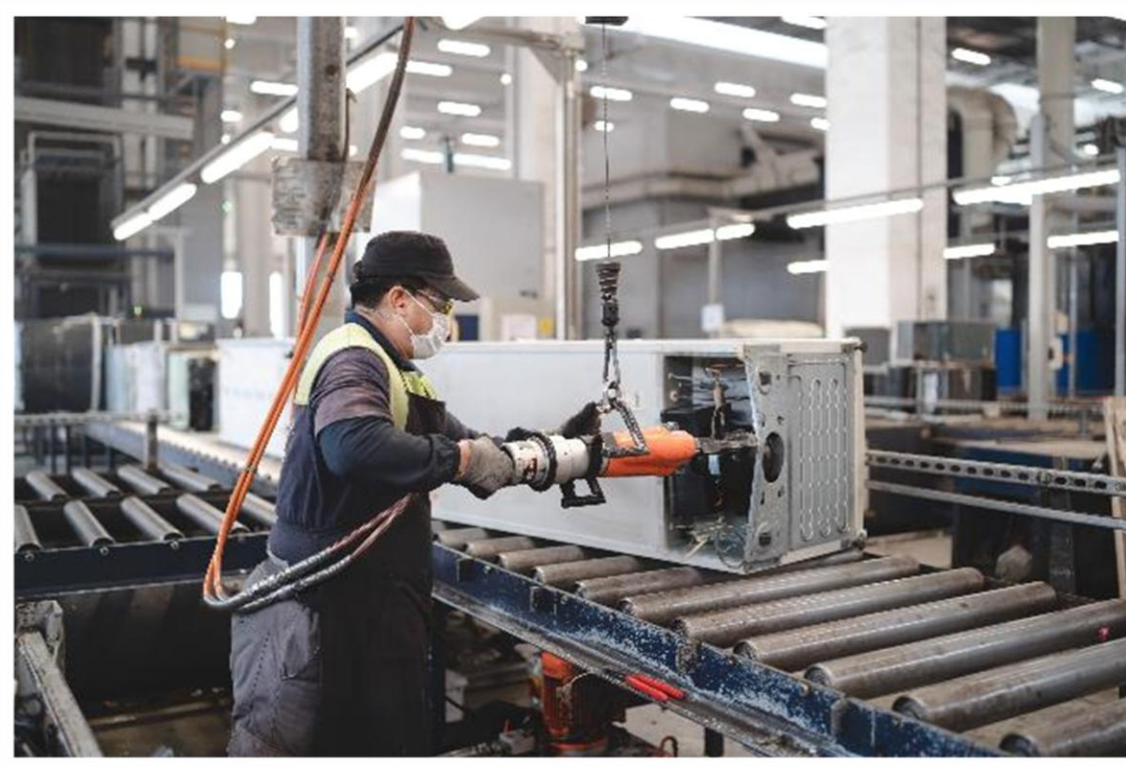


Dehumidifier

** originally as REE – regulated electrical equipment*

Why should e-waste be handled properly?

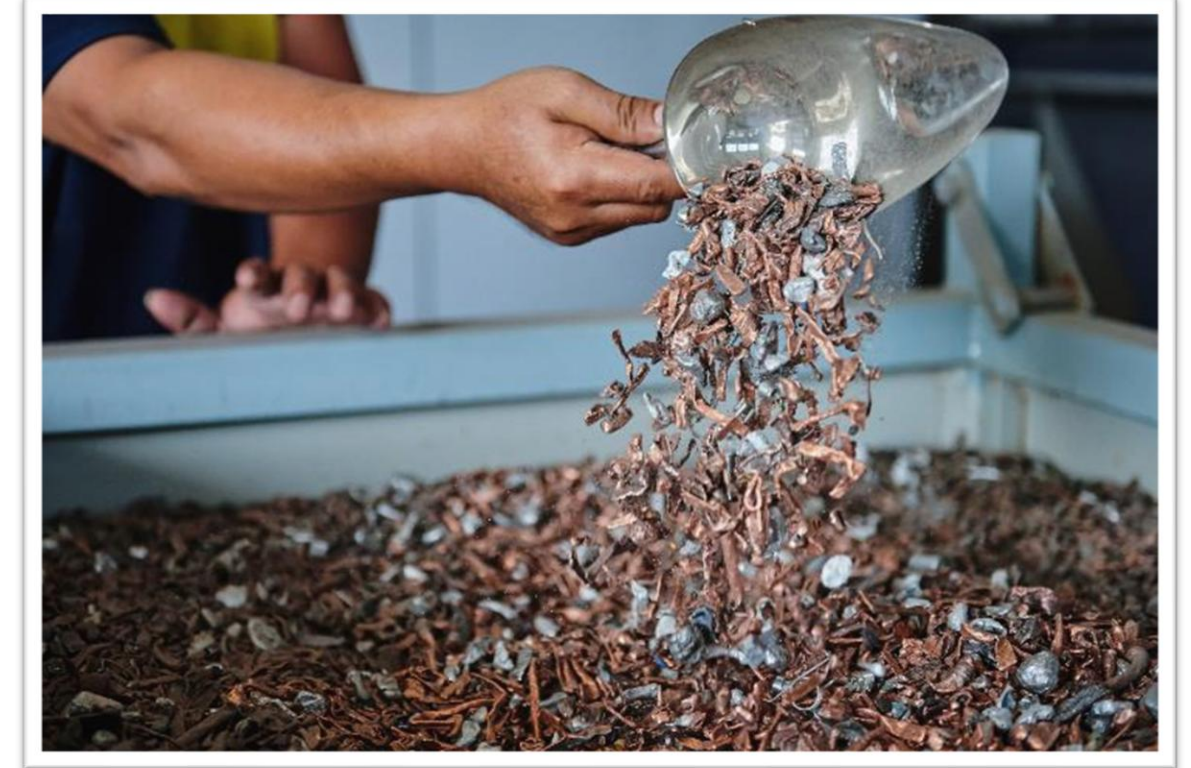
1 Detoxify and treat hazardous materials properly



2 Dispose e-waste correctly and responsibly



3 Recover valuable materials from e-waste



Statutory Free Removal Service for Public

REE Retailer sets up
Removal Service Plan
(Engage a licensed recycler)

Retailer informs
collector/recycler
the removal details

Collector/ Recycler
remove the old REE on
the scheduled date



Consumer buys an REE from retailer
and request removal service

Collector/recycler calls consumer to
confirm removal date/time

Turning Waste into Resources



Hotline & Online Application



Free Door-to-Door Collection Service



Regional Collection Centre
Sorting & Tracking System



WEEE PARK



Guided Tour



Refurbishment



Donation



Advanced Treatment
Technology



Secondary Raw Materials

Exceptional Recycling Rates
of Over 80%

One-stop
WEEE
recycling
procedure



Hotline 2676 8888



WhatsApp 6081 5096



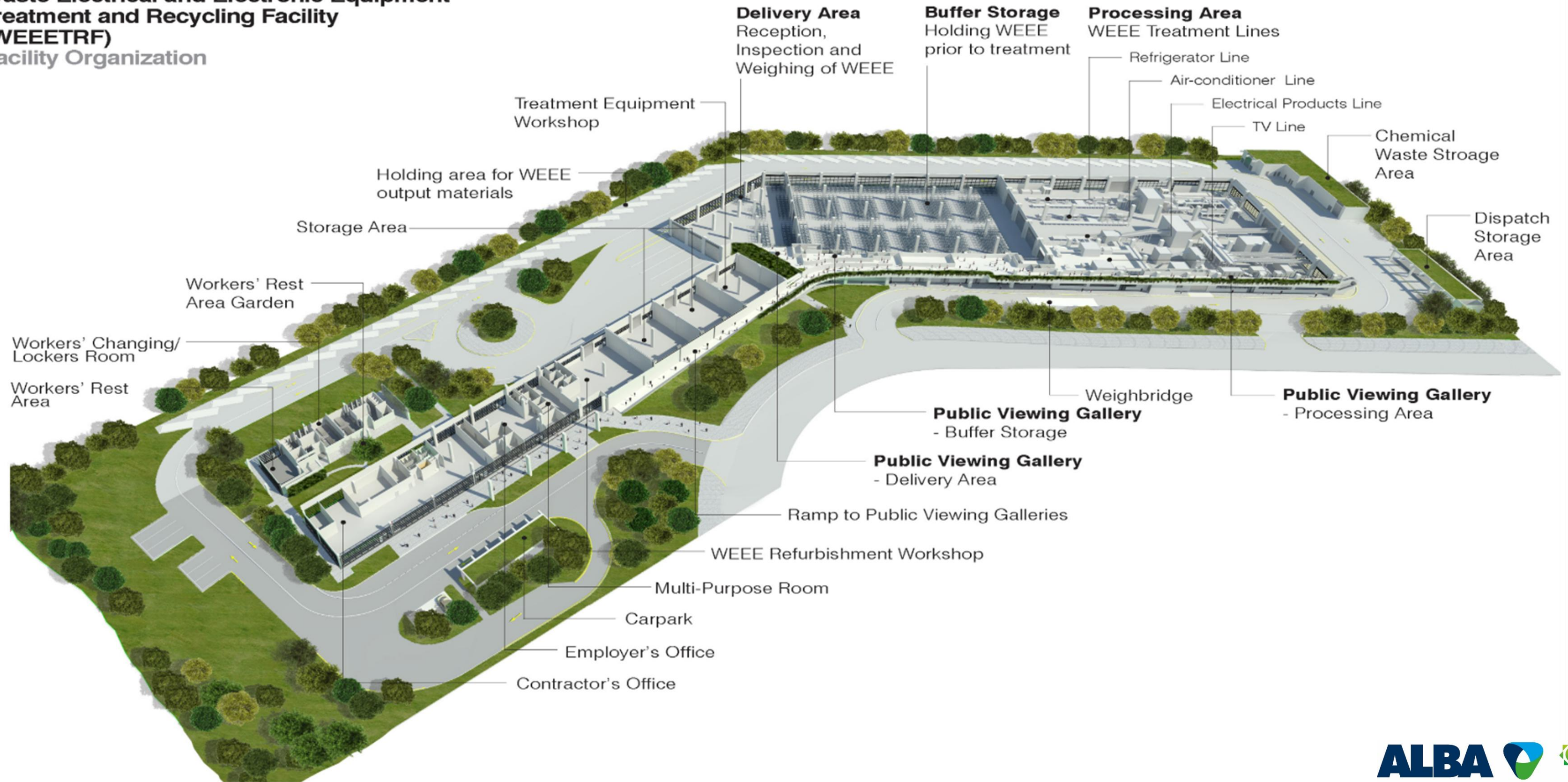
Email enquiry@weee.com.hk



www.weee.com.hk

Layout of WEEE · PARK

Waste Electrical and Electronic Equipment Treatment and Recycling Facility (WEEETRF) Facility Organization



Size of WEEE · PARK

Overall size : 3 hectares
Processing Hall 3,400 square meters
Buffer Storage 2,700 square meters

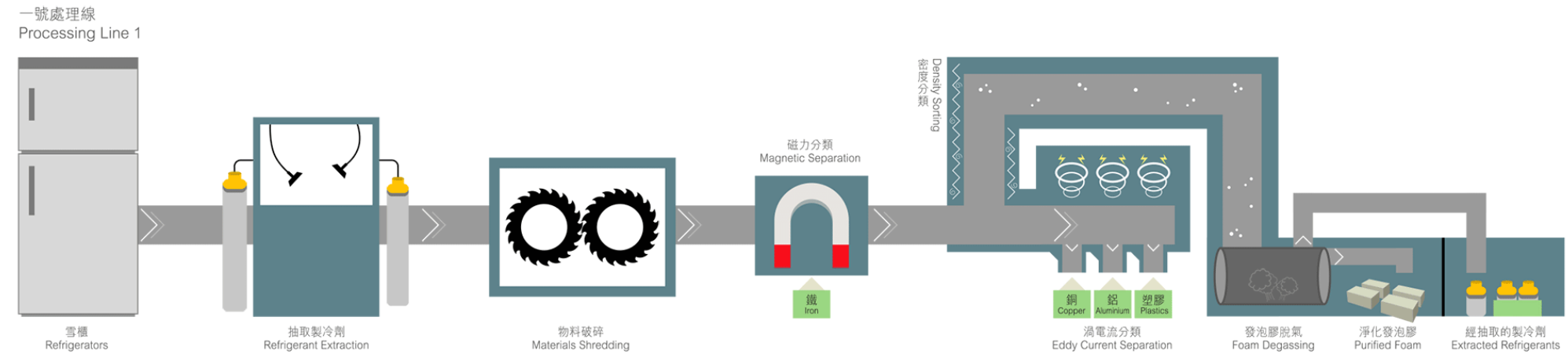
Regulated electrical equipment processing capacity



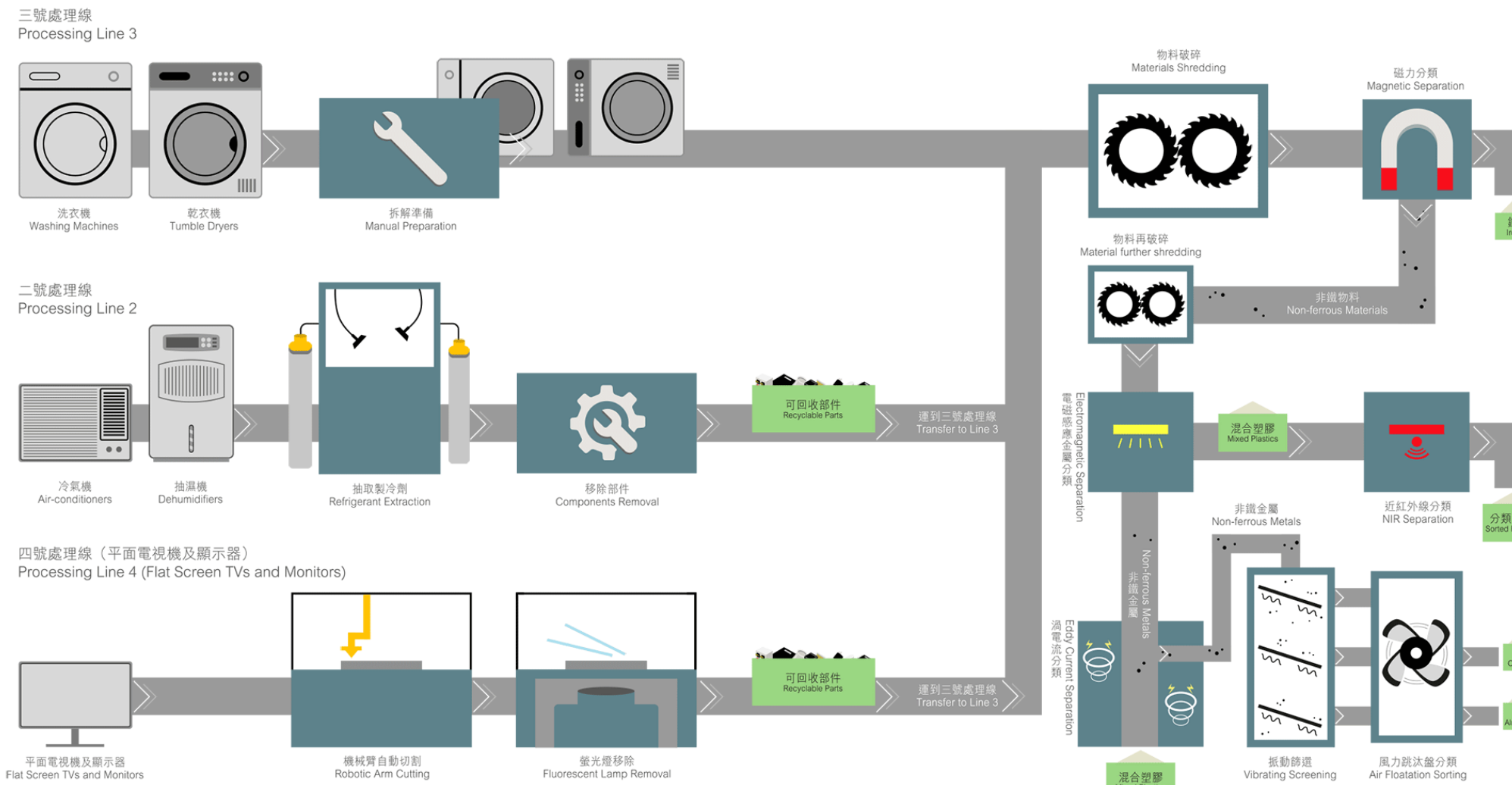
Design capacity 30,000 tonnes
Maximum capacity ~56,000 tonnes

Processing Lines

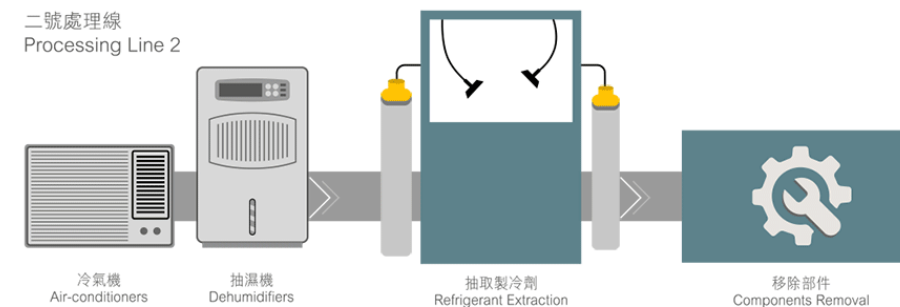
Line 1 - Refrigerator



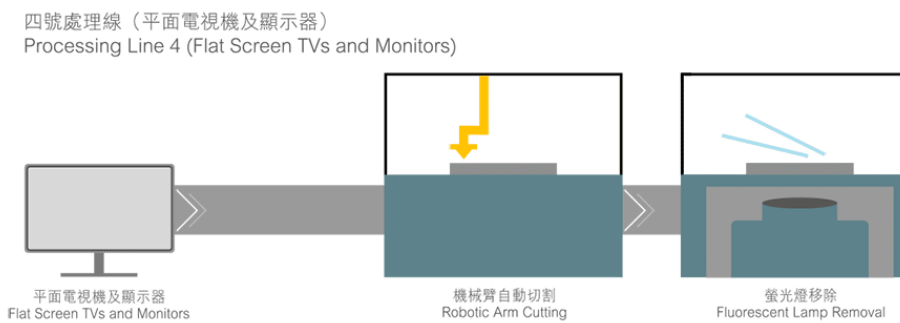
Line 3 - Washing machine, Dryers & Computer appliances



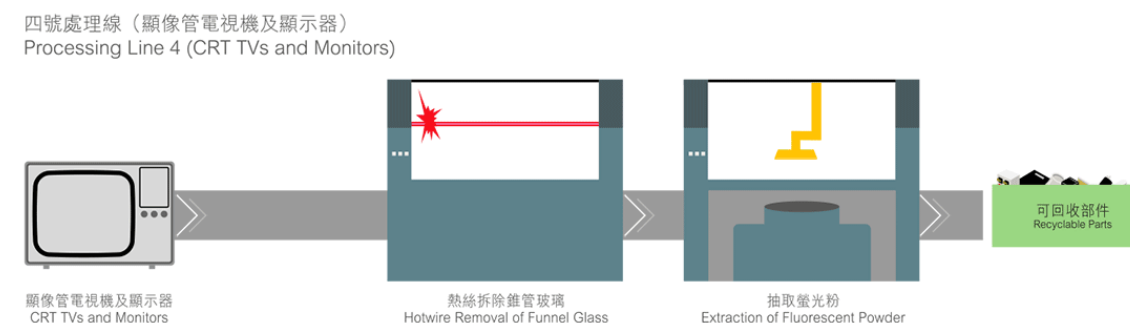
Line 2 - Air-conditioner & Dehumidifier



Line 4b,c,d - Flat screen TV & monitor



Line 4a - CRT TV & monitor





37,000+
WEEE · PARK
visitors

Education and Community Outreach

As of December 2025





Donation

Select functional electrical items to refurbish and then donate

All Hong Kong citizens may benefit from our donation service.

Donated
11,000+ items

As of December 2025



Recovered Secondary Raw Material

85%

2025 WEEE recycling rate



IRON

70,000+ tonnes



NON-FERROUS

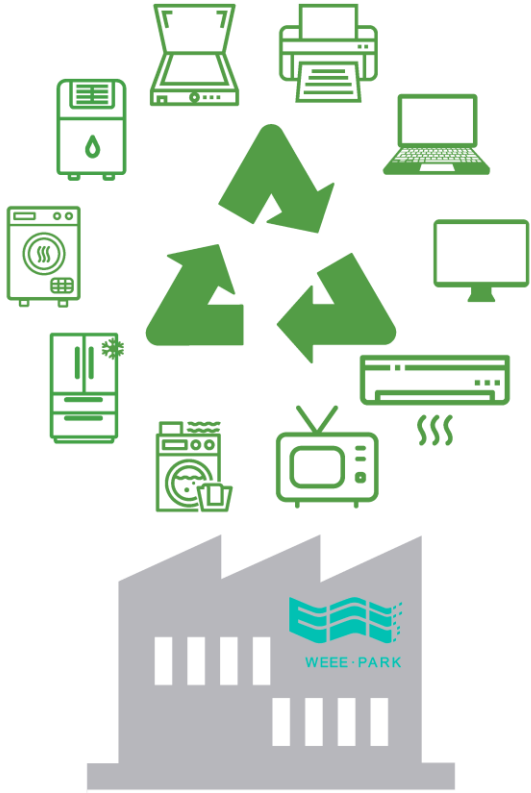
15,000+ tonnes



PLASTICS

25,000+ tonnes

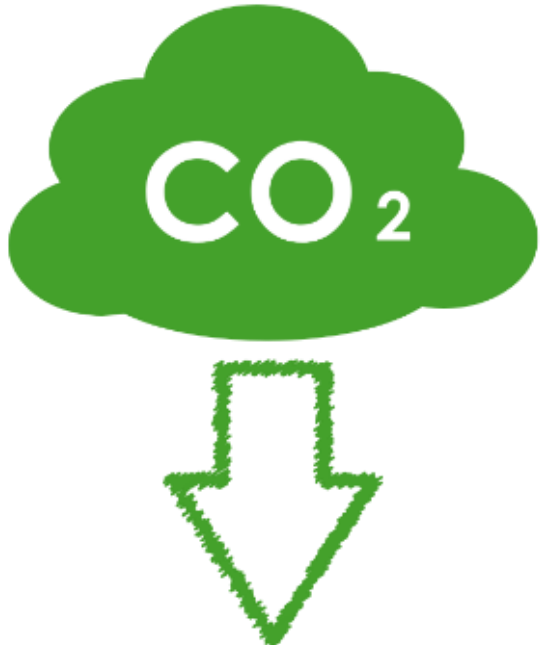
Environmental Benefits – Carbon Saving



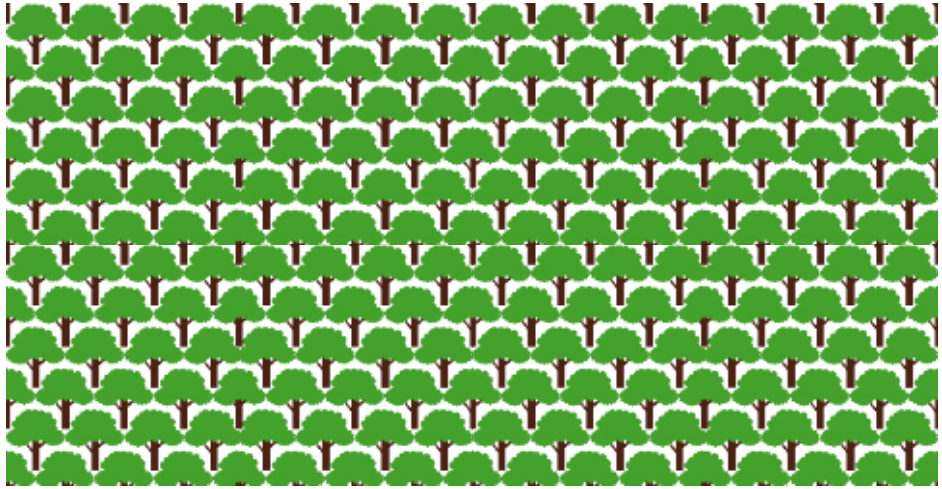
Processed **6.2 million+** WEEE



Recovered **130,000+** tonnes recyclable materials



Saved **550,000+** tonnes of carbon emissions



CO₂ absorbed ~**25 million+** trees #

Estimated by ALBA IWS : data accumulated from 2018 to December 2025

CO₂ removed by trees in one year = net number of additional trees planted since the concerned building is constructed x Removal Factor (estimated at 23kg/tree)



Treasure raw materials.